

4

3

2

1

2 3/8" OD
X.120" WALL TB

11±1"

R6" REF

17.6±1" TYP

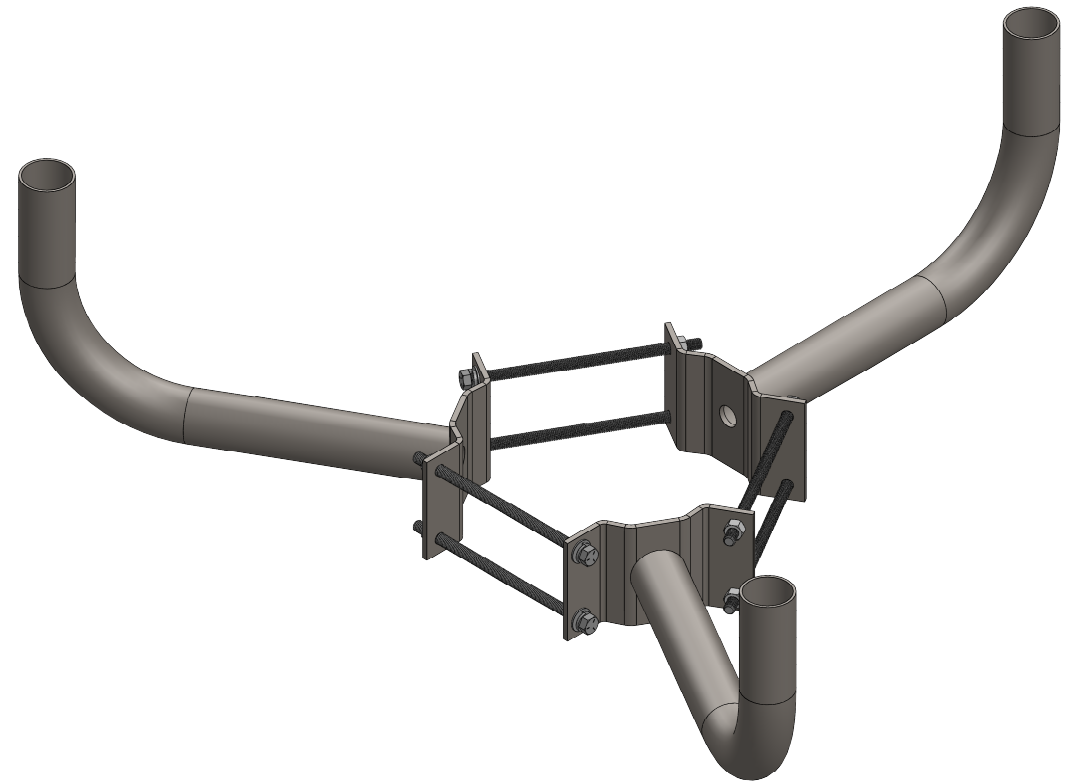
10"-13" DIA
WOOD POLE


1/4" THK
PLATE

1/2-13 HHCS
W/HEX NUT,
FLAT AND LOCK
WASHER
(6 PLACES)

All dimensions and specifications are
subject to change without any notice.

PROPRIETARY AND CONFIDENTIAL
THE INFORMATION CONTAINED IN
THIS DRAWING IS THE SOLE
PROPERTY OF *Energy Light, Inc.*
ANY REPRODUCTION IN PART OR
AS A WHOLE WITHOUT THE WRITTEN
PERMISSION OF *Energy Light, Inc.*
IS PROHIBITED.



		UNLESS OTHERWISE SPECIFIED:		NAME	DATE	TITLE:		
		DIMENSIONS ARE IN INCHES TOLERANCES: FRACTIONAL ± 1/64 ANGULAR: ± 0.5° TWO PLACE DECIMAL ±0.01 THREE PLACE DECIMAL ±0.005		DRAWN	MKA	07-09-21	3 Arm Wrap Around Bracket for Wood Poles with 10-13 Inch Diameter, with Arms at 120 Degrees	
		INTERPRET GEOMETRIC TOLERANCING PER:		ENG APPR.				
		MATERIAL		MFG APPR.				
		FINISH		Q.A.			SIZE	
NEXT ASSY	USED ON	APPLICATION		 Energy Light, Inc. 1881 Rose Road Lake Zurich, IL 60047		B	ITEM NO. WPB1153	
		DO NOT SCALE DRAWING				SCALE: 1:8	WEIGHT: 36 lbs	REV
						SHEET 1 OF 1		

4

3

2

1

B

B

A

A